

TRIMBLE PIVOT RTX APP TECHNICAL NOTES



The Trimble® Pivot RTX™ App is designed to perform absolute position estimation and coordinate integrity monitoring in real-time mode using the Trimble RTX technology. The Trimble Pivot RTX App operates on the Trimble Pivot™ platform, the foundation for multiple Infrastructure apps that serve various markets and their specific needs.

TRIMBLE RTX TECHNOLOGY

The RTX positioning solution is a high-accuracy Global Navigation Satellite System (GNSS) correction technology based on the generation and delivery of precise satellite corrections on a global scale. RTX technology delivers real-time position accuracy at the centimeter-level anywhere on or near the earth's surface, ensuring geographic coverage around the world.

More technical in-depth information on the RTX technology can be found on the Trimble Infrastructure webpage at www.trimble.com/infrastructure

TRIMBLE PIVOT RTX APP

Determining accurate and reliable coordinates for a Continuously Operating Reference Station (CORS) is critical in the following situations:

- When establishing a new reference station
- After movement of a CORS, e.g. due to an earthquake
- While monitoring existing network receivers

The Trimble Pivot RTX App enables you to perform absolute positioning of reference stations in real-time using the RTX technology. In addition to being useful for the determination of initial coordinates for new stations, especially when there are no nearby CORS stations to provide external control, the Pivot RTX App also provides a continuous absolute position integrity check to indicate possible antenna movements when they occur.



Trimble RTX Global Reference Station Framework

PIVOT RTX APP STATUS VIEWS

Application health status information is provided at a glance for all activated apps running on the Trimble Pivot platform. Both the Pivot RTX and RTX-PP Apps come with the interactive App Status View to assist the user in analyzing critical and non-critical situations. This smart and interactive feature will point to the exact module and functionality you want to analyze. The traffic light indicator provides high level application status feedback.

Additionally, the Pivot RTX App details pane provides a more in-depth look into the settings of the app.



Pivot RTX App Status View on the Trimble Pivot platform

ORDER INFORMATION

Default Configuration	Part Number
Trimble Pivot RTX App	96807-00

Optional Functions*	Part Number
QZSS Processing (RTX)	96807-01

*May be included for an additional charge

TRIMBLE AUTHORIZED DISTRIBUTION PARTNER

NORTH AMERICA

Trimble Engineering
& Construction Group
10355 Westmoor Drive, Suite 100
Westminster, Colorado 80021 • USA
800-480-0510 (Toll Free)
+1 720-887-6100 Phone
+1 720-887-6101 Fax

EUROPE

Trimble Germany GmbH
Am Prime Parc 11
65479 Raunheim • GERMANY
+49-6142-2100-0 Phone
+49-6142-2100-550 Fax

ASIA-PACIFIC

Trimble Navigation
Singapore Pty Limited
80 Marine Parade Road
#22-06, Parkway Parade
Singapore 449269 • SINGAPORE
+65-6348-2212 Phone
+65-6348-2232 Fax



www.trimble.com

TRIMBLE PIVOT RTX-PP APP TECHNICAL NOTES

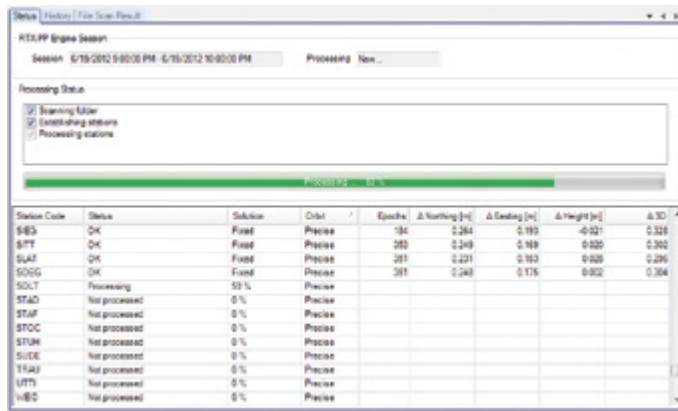


The Trimble® Pivot RTX-PP App is designed to perform absolute position estimation and coordinate integrity monitoring in postprocessing mode using the Trimble RTX™ technology. The Trimble Pivot RTX-PP App operates on the Trimble Pivot™ platform, the foundation for multiple Infrastructure apps that serve various markets and their specific needs.

TRIMBLE PIVOT RTX-PP APP

The Trimble Pivot RTX-PP App completes the Trimble Infrastructure apps portfolio of absolute positioning techniques by providing a postprocessed solution.

The Pivot RTX-PP App provides highly accurate position computations based on the RTX postprocessing technique. This enables precise determination of initial coordinates for a Continuously Operating Reference Station (CORS) or



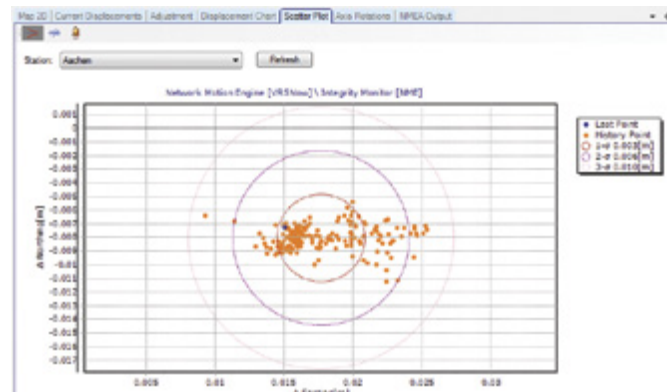
for measurements of displacements after station movement.

Trimble Pivot RTX-PP App

PIVOT RTX AND RTX-PP PAGES IN TRIMBLE PIVOT WEB APPLICATION

The Trimble Pivot platform includes a basic web installation. Some licensed apps add their own web pages providing additional functions. Pivot RTX and RTX-PP Apps each provide their own scatter plot web page, which allows an operator to publish the quality of any reference station position.

© 2012, Trimble Navigation Limited. All rights reserved. Trimble and the Globe & Triangle logo are trademarks of Trimble Navigation Limited, registered in the United States and in other countries. PIVOT and RTX are trademarks of Trimble Navigation Limited. All other trademarks are the property of their respective owners. PN 022506-151 (07/12)



Position Scatter Plot page

TYPICAL APPLICATIONS

- Detection of absolute movement, e.g. after an earthquake
- Time series of position changes, e.g. during an earthquake
- Highly accurate determination of station coordinates
- Tectonic movement detection

The Trimble Pivot RTX-PP App supports different processing modes: static or kinematic. The static mode enables users to receive highly accurate absolute positions while the kinematic mode allows users to process data to obtain position measurements during periods of station movement.



ORDER INFORMATION

Default Configuration	Part Number
Trimble Pivot RTX-PP App	96807-10

TRIMBLE AUTHORIZED DISTRIBUTION PARTNER

NORTH AMERICA

Trimble Engineering
& Construction Group
10355 Westmoor Drive, Suite 100
Westminster, Colorado 80021 • USA
800-480-0510 (Toll Free)
+1 720-887-6100 Phone
+1 720-887-6101 Fax

EUROPE

Trimble Germany GmbH
Am Prime Parc 11
65479 Raunheim • GERMANY
+49-6142-2100-0 Phone
+49-6142-2100-550 Fax

ASIA-PACIFIC

Trimble Navigation
Singapore Pty Limited
80 Marine Parade Road
#22-06, Parkway Parade
Singapore 449269 • SINGAPORE
+65-6348-2212 Phone
+65-6348-2232 Fax



www.trimble.com